

SCALE 1" = 300'  
 JAN 1, 1981

A	C	D
E	F	G
I	J	K
M	N	O

CHESTER B177

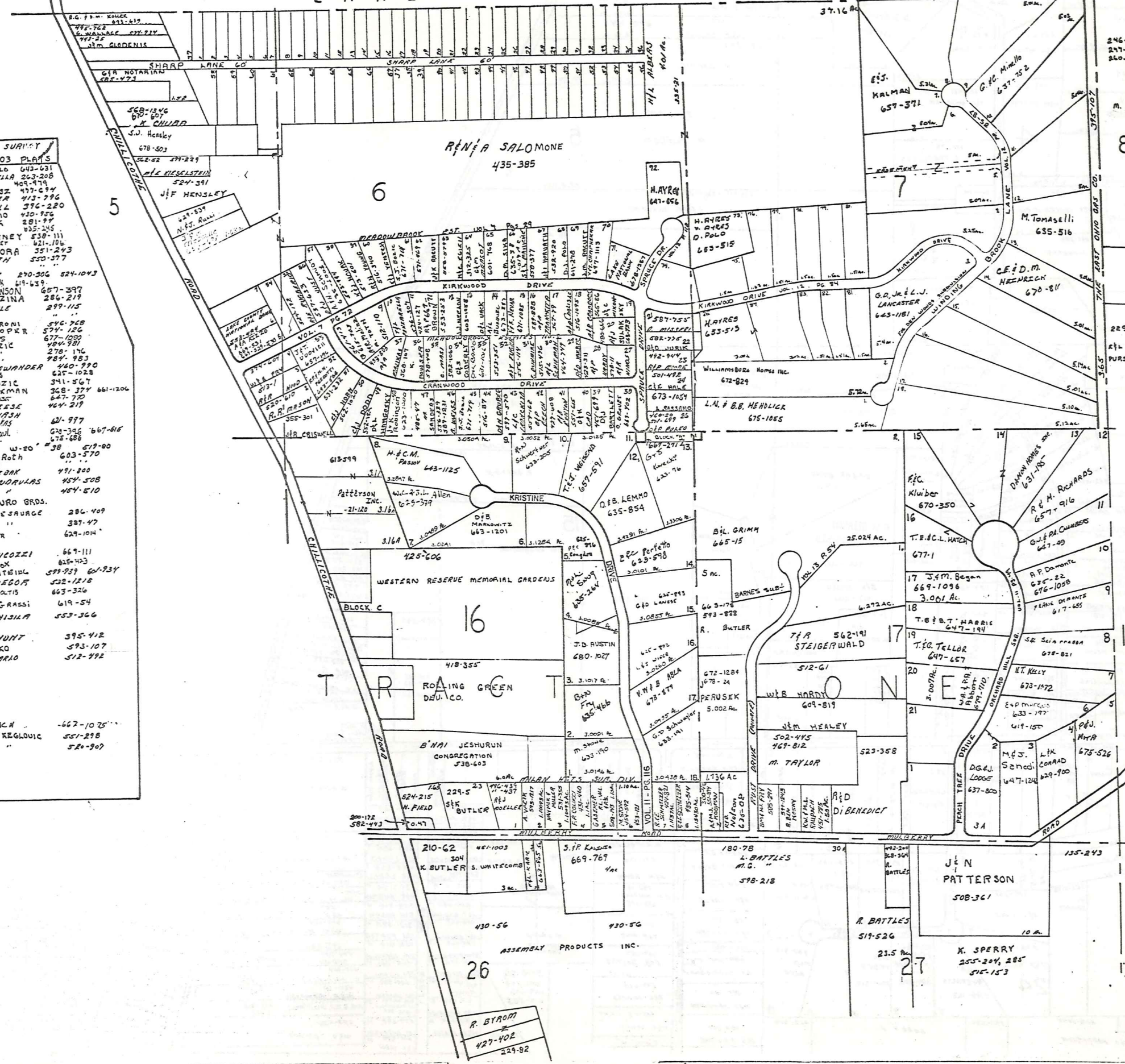
L A K E C O U N T Y

306

F.A. Scavone Survey

**E. SHARP SURVEY VOL. 6 PG. 103 PLATS**

1. NEZ. NOGAL 643-631
2. OFS. GIOCONIA 203-208
3. UKI. SAKUO 409-479
4. RIB. JUHASZ 477-674
5. OFL. NOLDA 473-746
6. F. SMALL 476-220
7. R. DI SIAIO 420-725
8. M. MLEBAR 281-97
9. V. ANZIO 225-225
10. BTJ. WHITNEY 535-111
11. TM. ZIEGLER 521-106
12. JHT. SIKORA 351-243
13. JIM. SMITH 550-377
14. " " " " " " " "
15. " " " " " " " "
16. R. ROBY 290-506 824-1043
17. R. JOHNSON 413-651
18. P.A. JOHNSON 657-397
19. BREZINA 286-219
20. HJM. STULE 299-115
21. " " " " " " " "
22. J.C. DARONI 546-728
23. W.J. COOPER 574-126
24. W.J. BENS 677-100
25. W.D. BOZIC 494-901
26. " " " " " " " "
27. " " " " " " " "
28. " " " " " " " "
29. " " " " " " " "
30. " " " " " " " "
31. " " " " " " " "
32. " " " " " " " "
33. " " " " " " " "
34. " " " " " " " "
35. " " " " " " " "
36. " " " " " " " "
37. " " " " " " " "
38. " " " " " " " "
39. " " " " " " " "
40. " " " " " " " "
41. " " " " " " " "
42. " " " " " " " "
43. " " " " " " " "
44. " " " " " " " "
45. " " " " " " " "
46. " " " " " " " "
47. " " " " " " " "
48. " " " " " " " "
49. " " " " " " " "
50. " " " " " " " "
51. " " " " " " " "
52. " " " " " " " "
53. " " " " " " " "
54. " " " " " " " "
55. " " " " " " " "
56. " " " " " " " "
57. " " " " " " " "
58. " " " " " " " "
59. " " " " " " " "
60. " " " " " " " "
61. " " " " " " " "
62. " " " " " " " "
63. " " " " " " " "
64. " " " " " " " "
65. " " " " " " " "
66. " " " " " " " "
67. " " " " " " " "
68. " " " " " " " "



SCALE 1/300  
JAN. 1, 1981

A	B	C	D
E	F	G	H
I	J	K	L
M	N	O	P

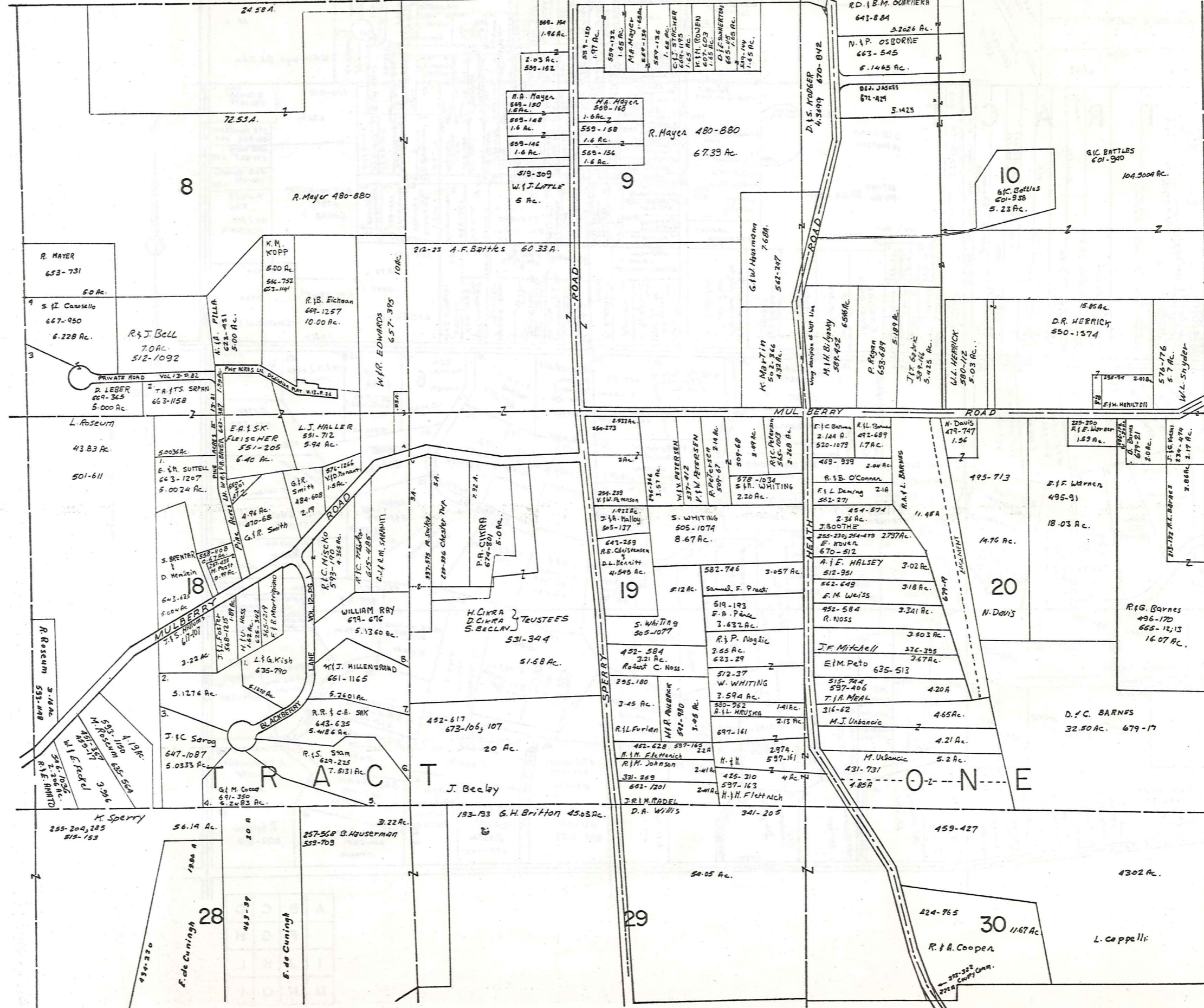
CHESTER C  
INC. MEADOWBROOK  
ESTATES

LAKE

GEM ROAD

COUNTY

CHARDON TOWNSHIP

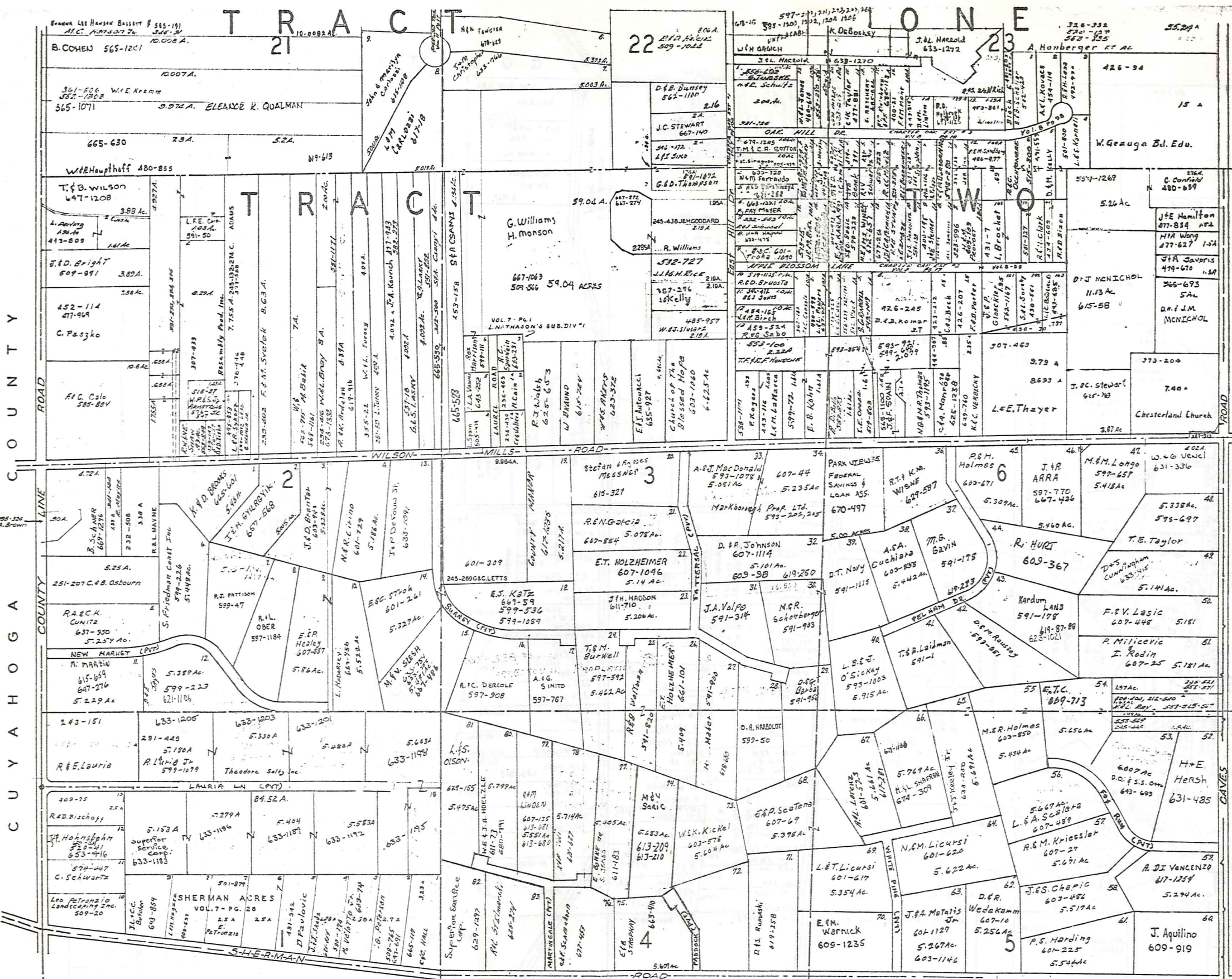


SCALE 1"=300'  
JAN. 1, 1981

P  
I  
S  
N  
T  
O  
W  
N  
S  
H  
I  
P  
M  
U  
N  
I  
C  
I  
P  
A  
L

A	B	C
E	F	G
I	J	K
M	N	O

CHESTER D

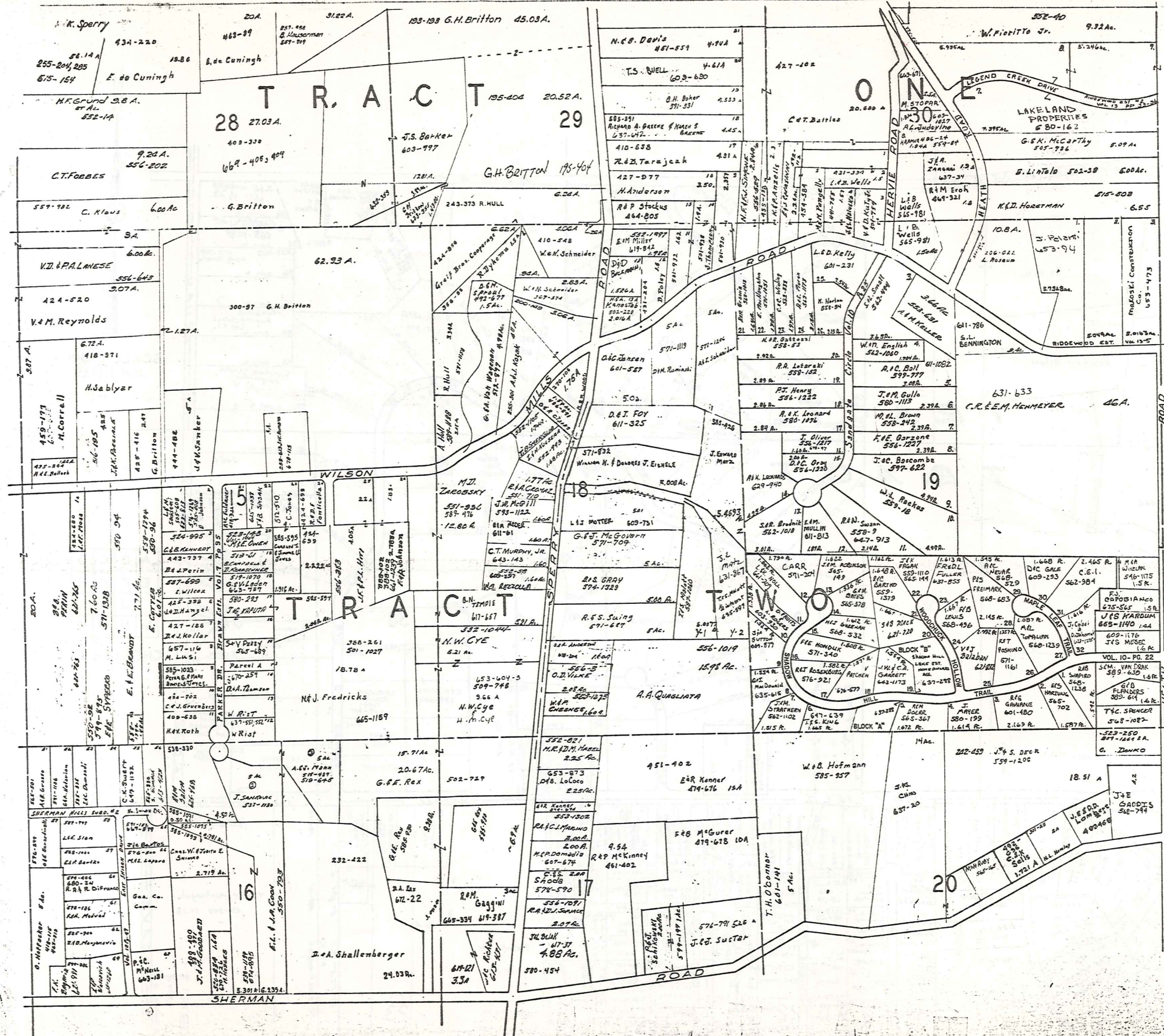


SCALE 1"=300'  
 JAN. 1, 1987

A	B	C	D
F	G	H	
I	J	K	L
M	N	O	P







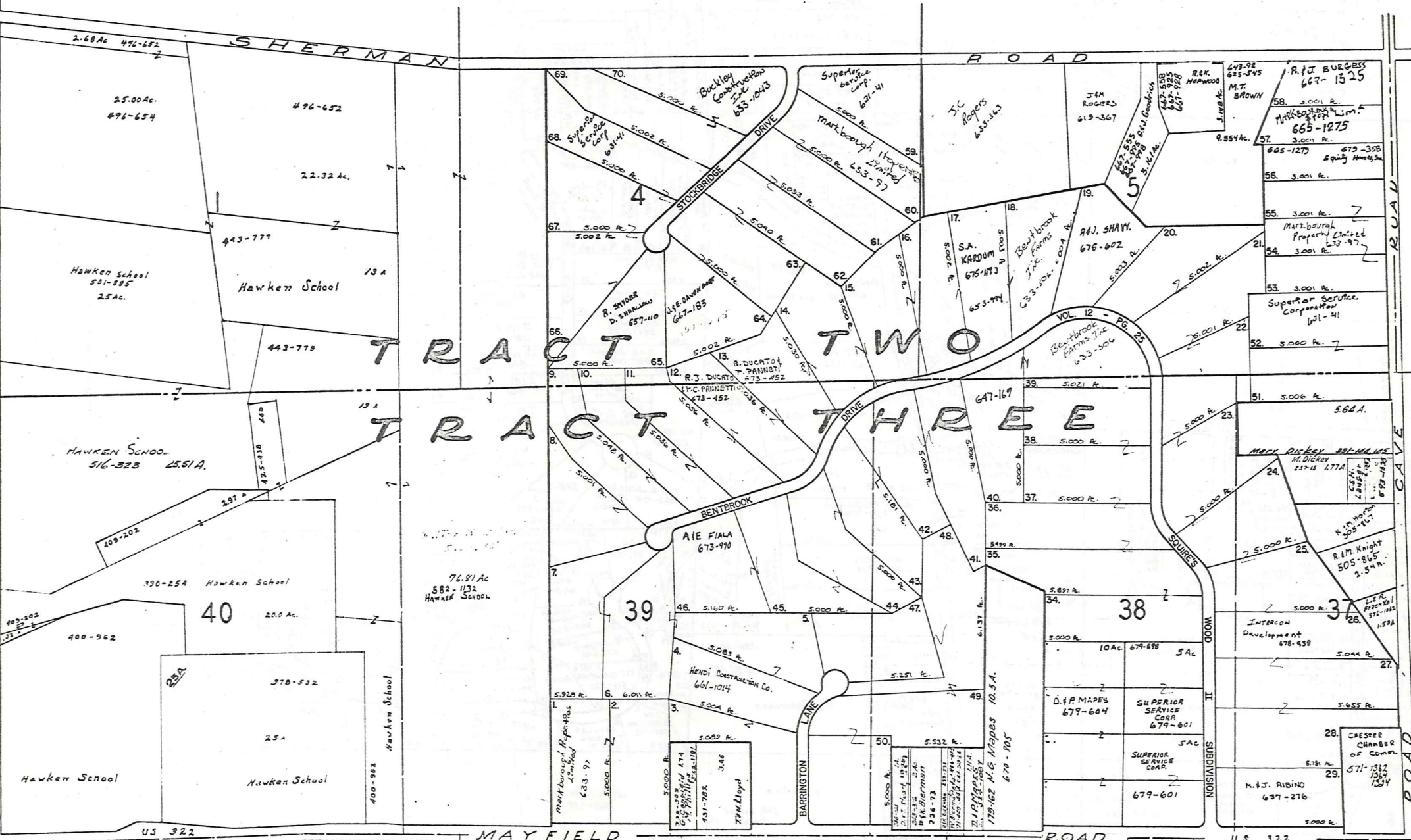
SCALE 1"=300'  
 JAN. 1, 1907

183

A	B	C	D
E	F	G	H
I	J	K	L
M	N	O	P

CHESTER

COUNTY ROAD

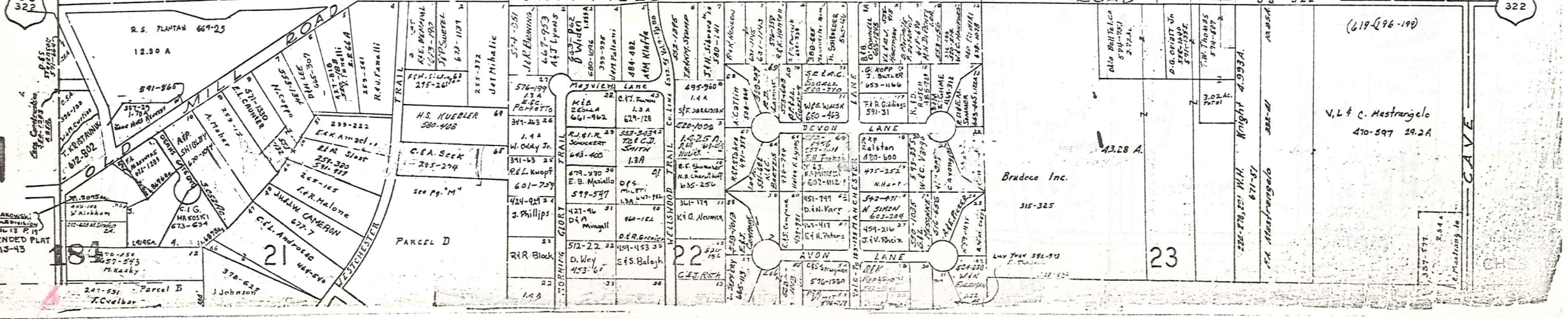


SCALE 1"=300'  
JAN. 1, 1961

A	B	C	D
E	F	G	H
J	K	L	
M	N	O	P

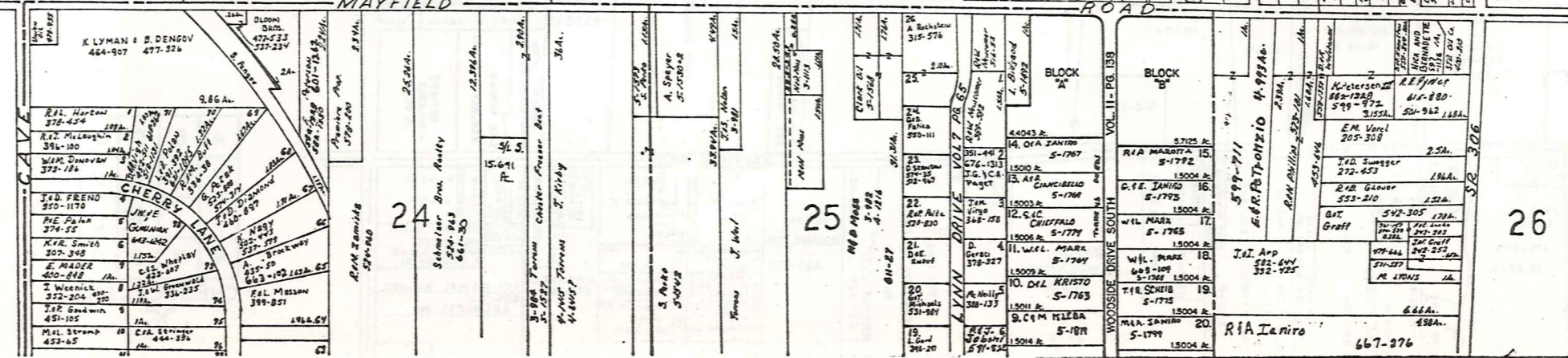
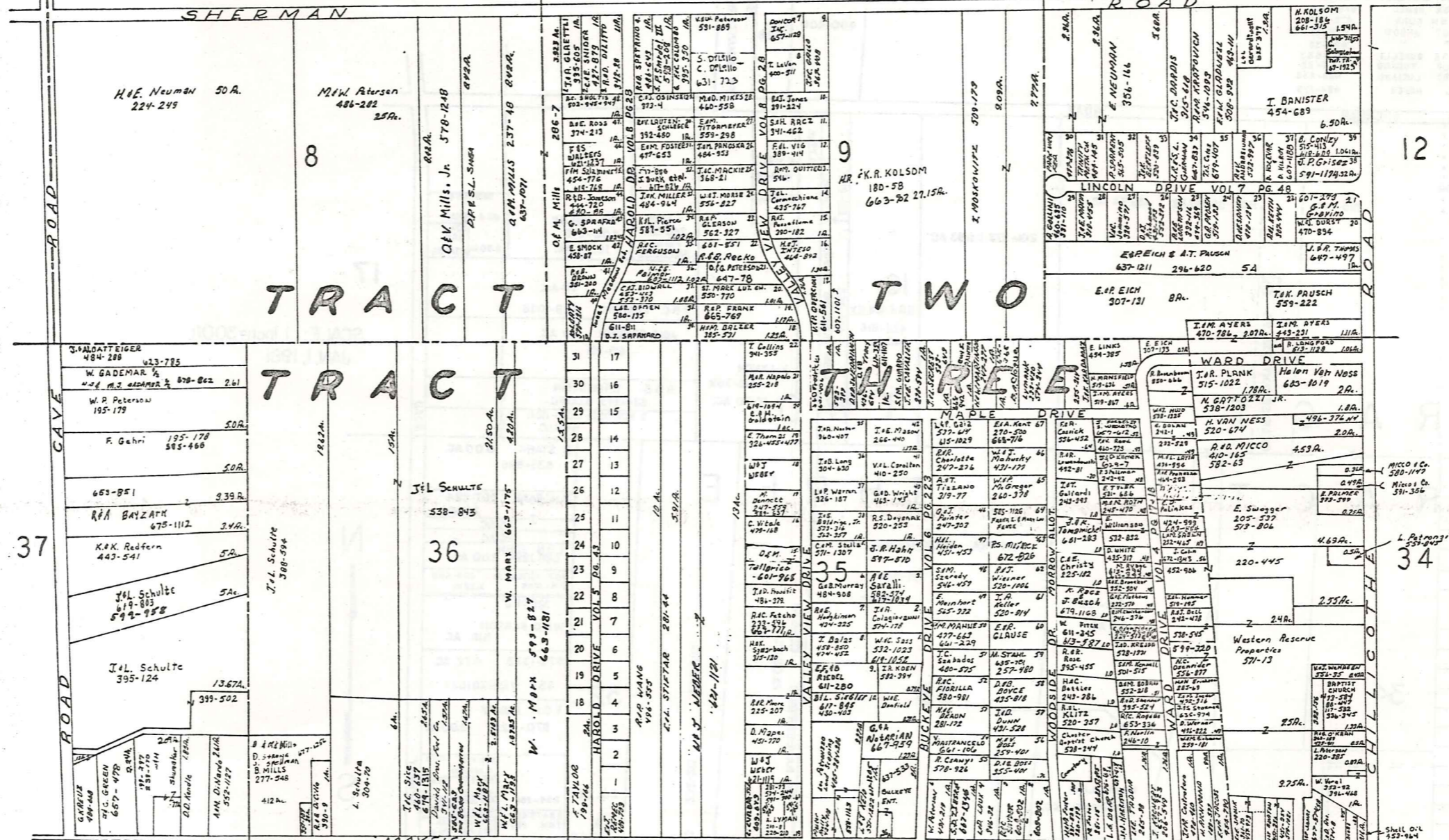
CHESTER I

US 322



US 322

HAROLD DRIVE		ALLOT. VOL. 5 PG. 43	
1	D. J. EREN	621-9	H. Fudrenski
2	C.M. Levensberger	554-81	P.H. Muehlen
3	D.O. Gualso	647-627	R.T. Butcher
4	M.B. Palka	514-290	D.M. Vecchio
5	E. Demise	661-377	J.C. Taylor
6	R.E. Mendell	477-501	R.E. Moran
7	W.R. Cappel	673-338	H.C. Smith
8	R.D. Pierce	504-237	M.J. L. MURKIN
9	A. Padernesi	677-489	J.L. Azzurri
10	R.R. Posen	509-365	R.D. PARACHAND
11	R.R. Morris	466-26	R.A. Gugliotta
12	P.D. ALPOMER	465-77	S. Sime
13	T.L. Taitco	491-478	
14	M.C. Scoville	567-374	
15	F.L. Boach	457-23	
16	A.M. Olson	454-871	
17	R.G. Saracha	447-177	
18	C.M. Bando	520-342	
19	R. G. L. Smith	481-481	
20	L.A. Rut	444-284	

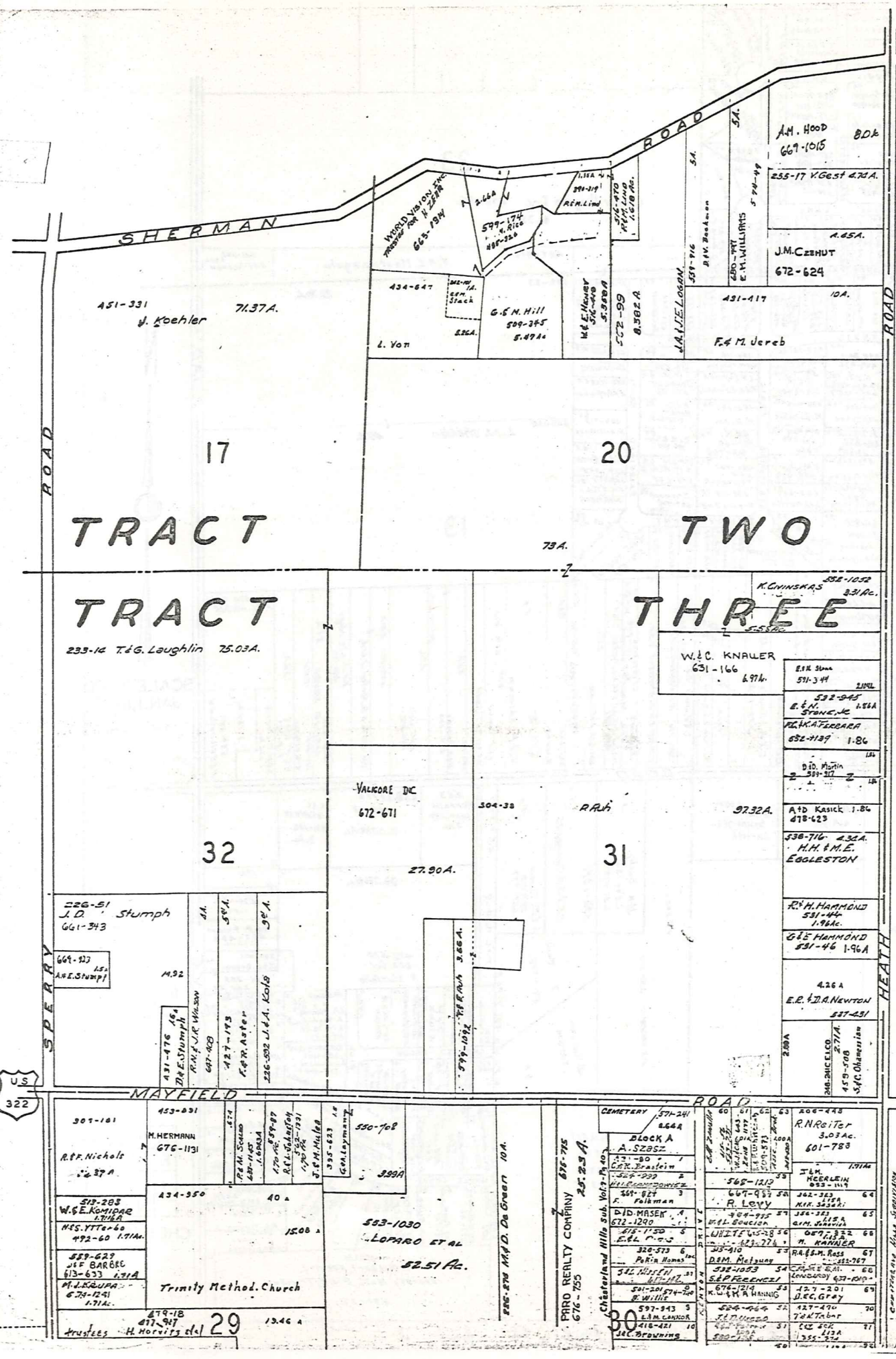


SCALE 1"=300  
 JAN 1, 1981

A	B	C	D
E	F	G	H
I	J	K	L
M	N	O	P

CHESTER J 185





M U N I C I P A L I T Y O F M U N S O N T O W N S H I P



SCALE 1"=300'  
JAN. 1, 1972

- CHESTERLAND HILLS SUBDIV
- 1 J. J. Allen 316-154
  - 2 D. A. Bendish 320-279
  - 3 R. E. M. Green 463-589
  - 4 E. C. Wain 326-485
  - 5
  - 6
  - 7
  - 8
  - 9
  - 10
  - 11
  - 12
  - 13
  - 14
  - 15
  - 16
  - 17
  - 18
  - 19
  - 20
  - 21
  - 22
  - 23
  - 24
  - 25
  - 26
  - 27
  - 28
  - 29
  - 30
  - 31
  - 32
  - 33
  - 34
  - 35
  - 36
  - 37
  - 38
  - 39
  - 40
  - 41
  - 42
  - 43
  - 44
  - 45
  - 46
  - 47
  - 48
  - 49
  - 50
  - 51
  - 52
  - 53
  - 54
  - 55
  - 56
  - 57
  - 58
  - 59
  - 60
  - 61
  - 62
  - 63
  - 64
  - 65
  - 66
  - 67
  - 68
  - 69
  - 70
  - 71
  - 72

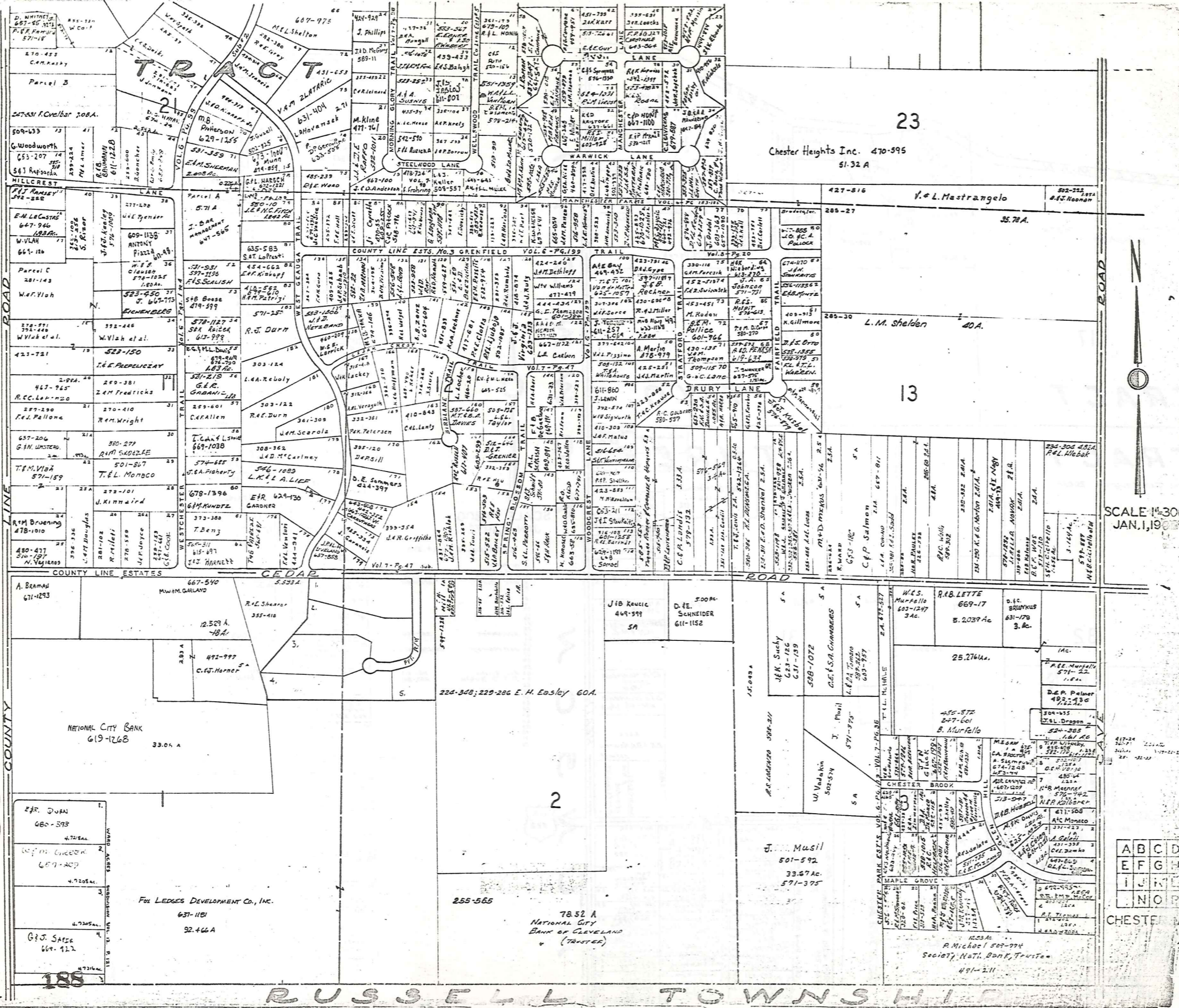
MAYFIELD ROAD US 322		MYRLIN HEIGHTS SUB	
		VOL. 3 PG. 4 PLATS	
		SCALE 1"=100'	
1	271 A	1	667-1447
2	271 B	2	582-1190
3	271 C	3	211 M. TROTSKY
4	271 D	4	211 M. TROTSKY
5	271 E	5	211 M. TROTSKY
6	271 F	6	211 M. TROTSKY
7	271 G	7	211 M. TROTSKY
8	271 H	8	211 M. TROTSKY
9	271 I	9	211 M. TROTSKY
10	271 J	10	211 M. TROTSKY
11	271 K	11	211 M. TROTSKY
12	271 L	12	211 M. TROTSKY
13	271 M	13	211 M. TROTSKY
14	271 N	14	211 M. TROTSKY
15	271 O	15	211 M. TROTSKY
16	271 P	16	211 M. TROTSKY
17	271 Q	17	211 M. TROTSKY
18	271 R	18	211 M. TROTSKY
19	271 S	19	211 M. TROTSKY
20	271 T	20	211 M. TROTSKY
21	271 U	21	211 M. TROTSKY
22	271 V	22	211 M. TROTSKY
23	271 W	23	211 M. TROTSKY
24	271 X	24	211 M. TROTSKY
25	271 Y	25	211 M. TROTSKY
26	271 Z	26	211 M. TROTSKY
27	271 AA	27	211 M. TROTSKY
28	271 AB	28	211 M. TROTSKY
29	271 AC	29	211 M. TROTSKY
30	271 AD	30	211 M. TROTSKY
31	271 AE	31	211 M. TROTSKY
32	271 AF	32	211 M. TROTSKY
33	271 AG	33	211 M. TROTSKY
34	271 AH	34	211 M. TROTSKY
35	271 AI	35	211 M. TROTSKY
36	271 AJ	36	211 M. TROTSKY
37	271 AK	37	211 M. TROTSKY
38	271 AL	38	211 M. TROTSKY
39	271 AM	39	211 M. TROTSKY
40	271 AN	40	211 M. TROTSKY
41	271 AO	41	211 M. TROTSKY
42	271 AP	42	211 M. TROTSKY
43	271 AQ	43	211 M. TROTSKY
44	271 AR	44	211 M. TROTSKY
45	271 AS	45	211 M. TROTSKY
46	271 AT	46	211 M. TROTSKY
47	271 AU	47	211 M. TROTSKY
48	271 AV	48	211 M. TROTSKY
49	271 AW	49	211 M. TROTSKY
50	271 AX	50	211 M. TROTSKY
51	271 AY	51	211 M. TROTSKY
52	271 AZ	52	211 M. TROTSKY
53	271 BA	53	211 M. TROTSKY
54	271 BB	54	211 M. TROTSKY
55	271 BC	55	211 M. TROTSKY
56	271 BD	56	211 M. TROTSKY
57	271 BE	57	211 M. TROTSKY
58	271 BF	58	211 M. TROTSKY
59	271 BG	59	211 M. TROTSKY
60	271 BH	60	211 M. TROTSKY

JAN. 1, 1980

A	B	C	D
E	F	G	H
I	J	K	L
M	N	O	P

CHESTER L

CUYAHOGA COUNTY



23  
Chester Heights Inc. 470-595  
61.32 A

285-27  
L. Mastrangelo  
35.78 A.

285-30  
L.M. Sheldon  
40 A.

13

SCALE 1"=300  
JAN. 1, 1907

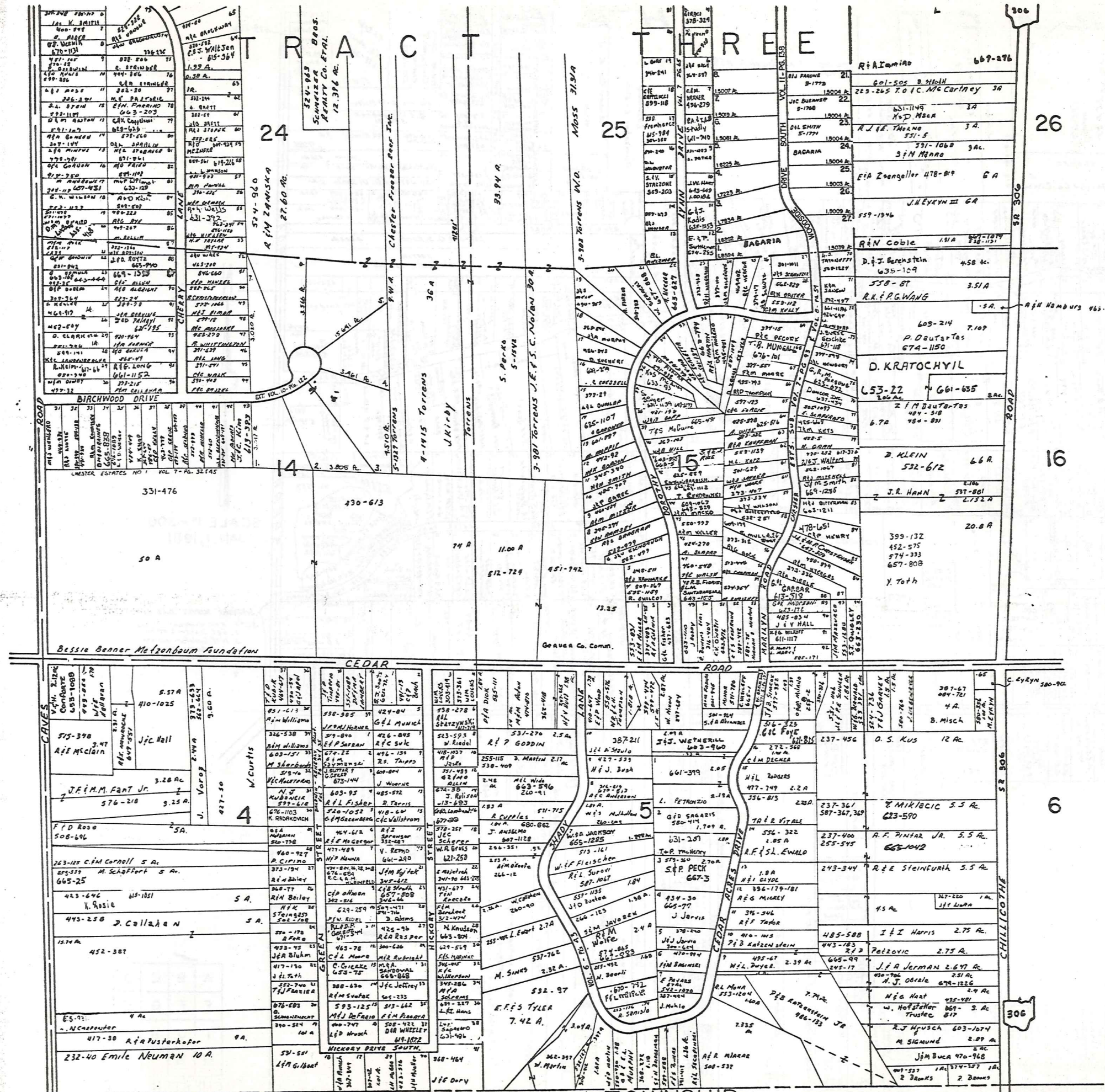
ABCD  
EFGH  
IJKL  
MNOP

CHESTER

Fox LEDGES DEVELOPMENT Co., Inc.  
631-1181  
32.46 A

78.52 A  
NATIONAL CITY  
BANK OF CLEVELAND  
(TRUSTEE)

12.53 Ac  
A. Michael 509-774  
Society Natl. Bank, Trustee  
491-211

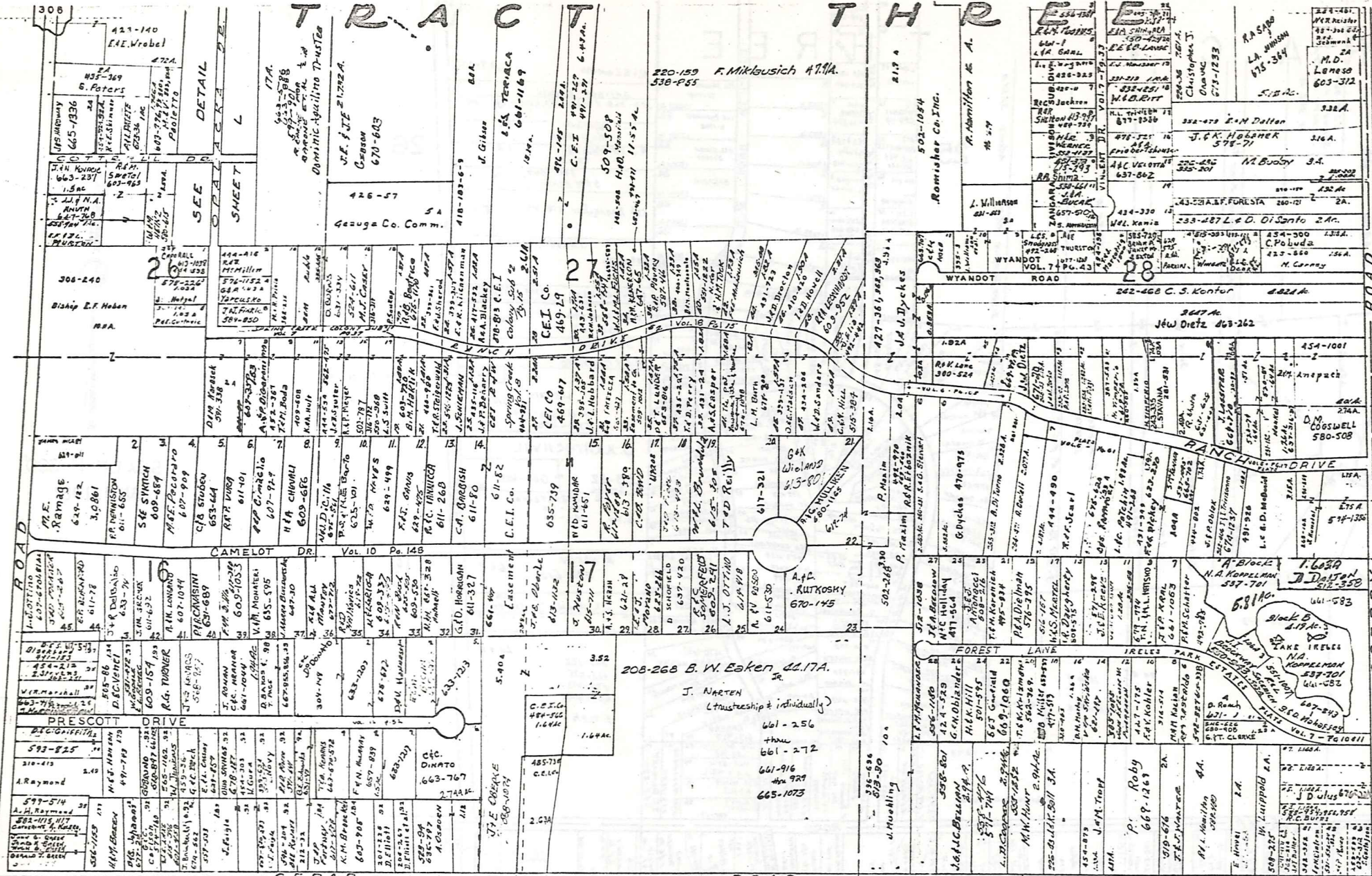


SCALE 1"=300'  
JAN. 1, 1981

A	B	C	D
E	F	G	H
I	J	K	L
M	O	P	

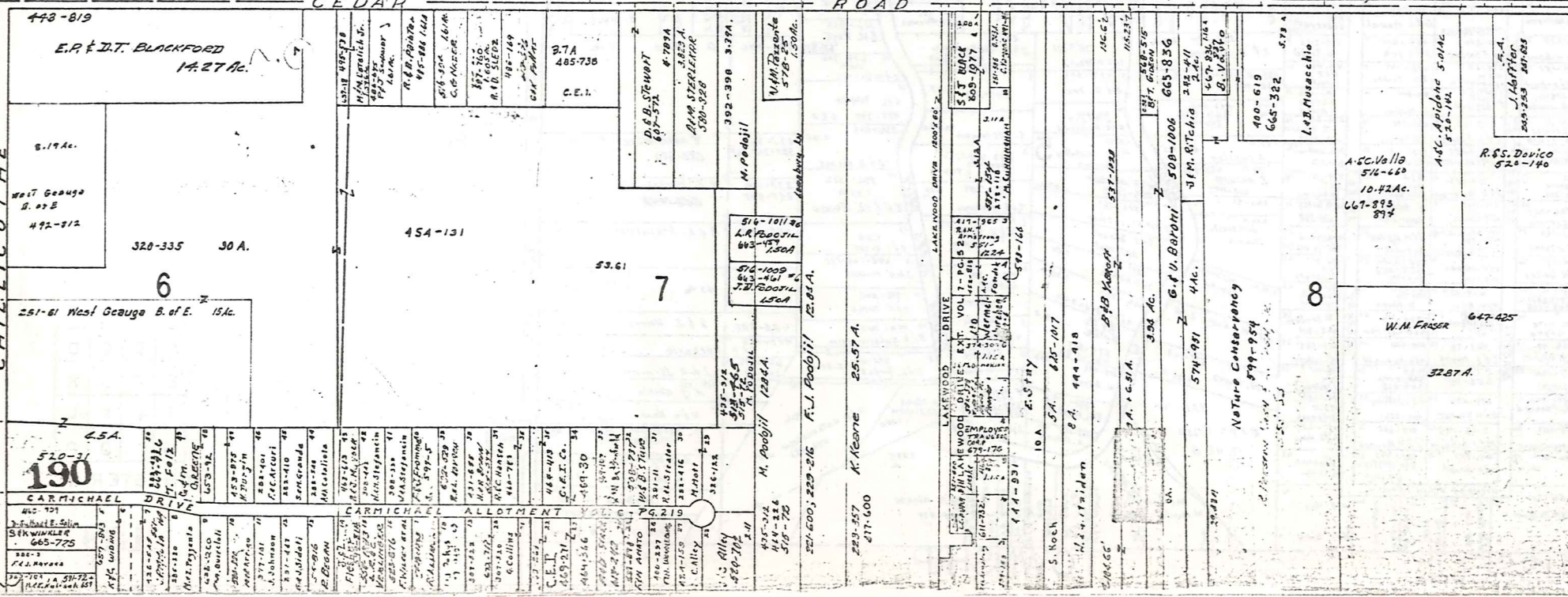
CHESTER N

# T R A C T T H R E E



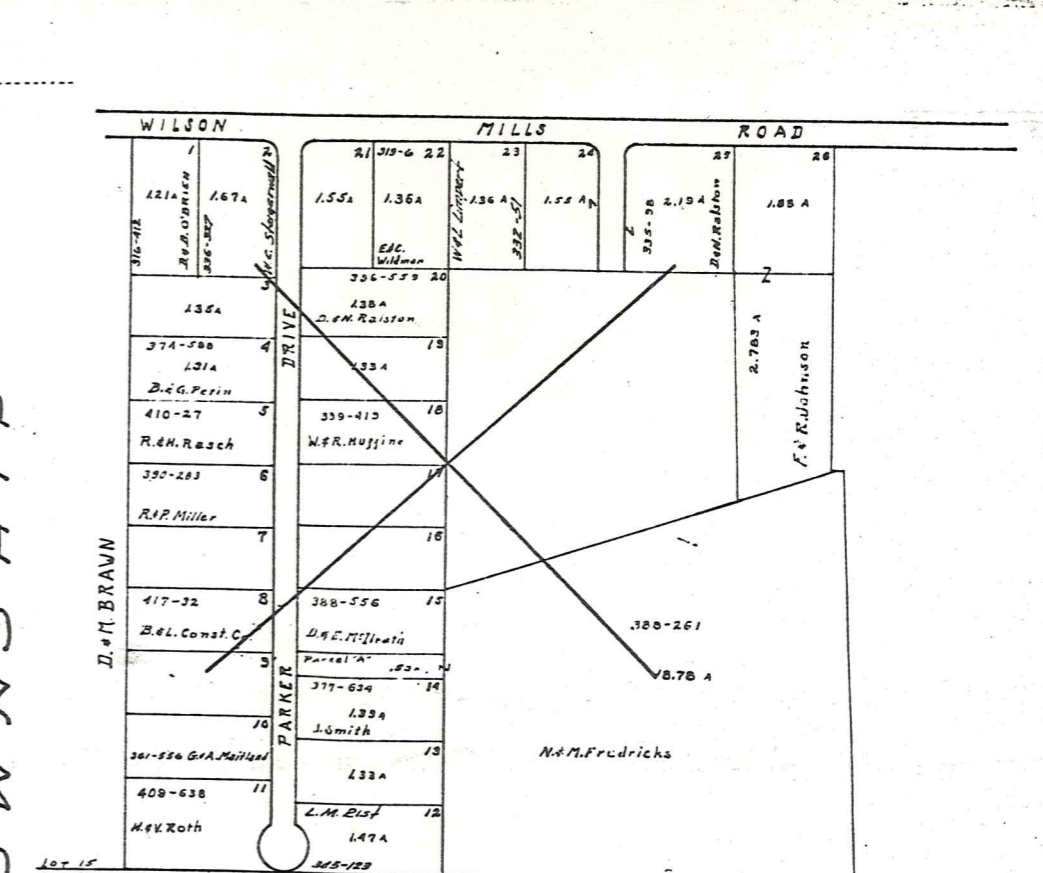
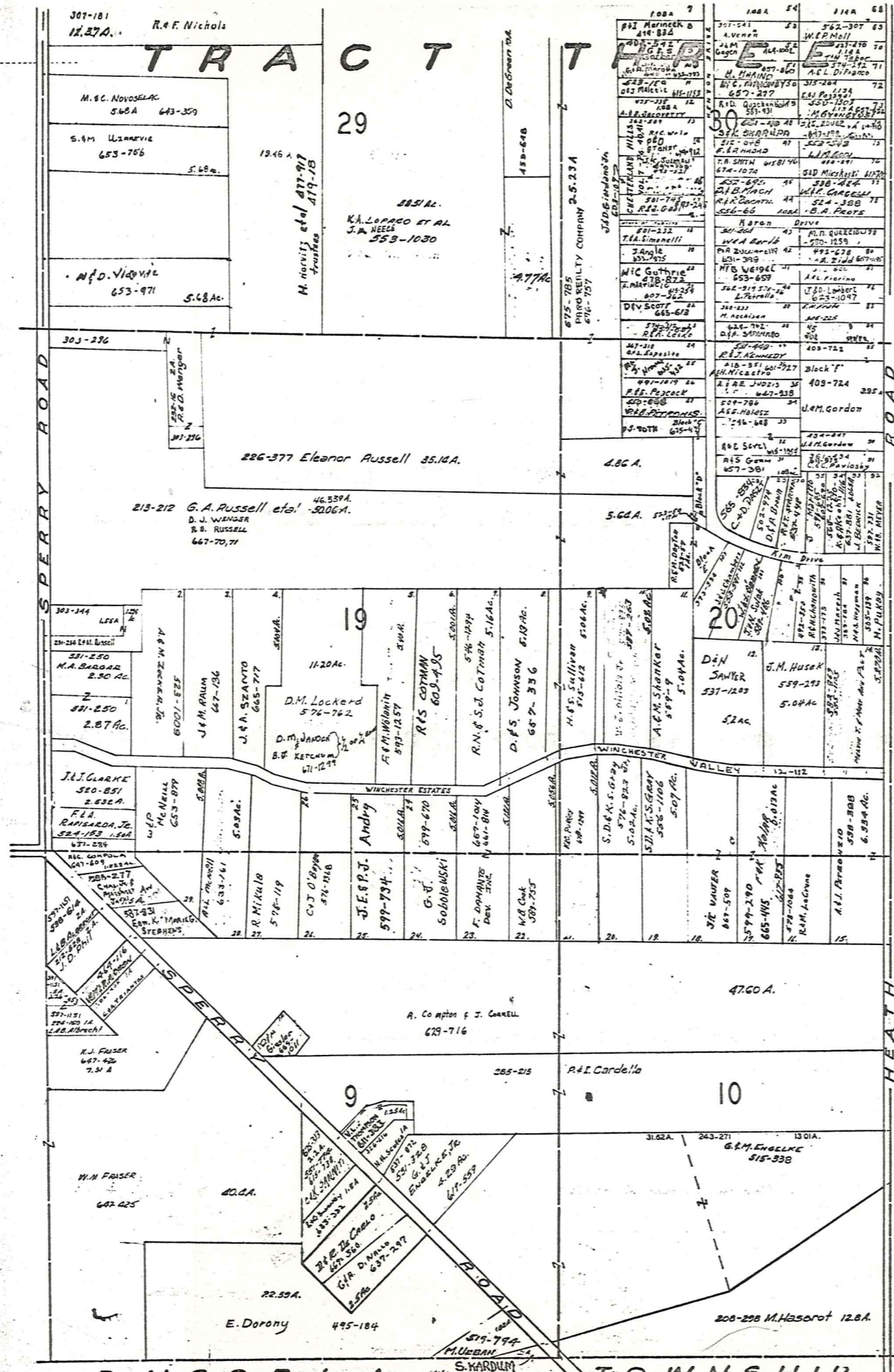
SCALE 1" = 300'  
JAN. 1, 1961

- SHOGER SURVEY Vol. 6 Pg. 45 Plots
1. E.A. Conroy 202-252
  2. W.C. Stanford 191-235
  3. W.E. Gustafson 200-500
  4. BUTTS 250-7 578-754, 615
  5. JEM Nathan 21-412
  6. ?
  7. ?

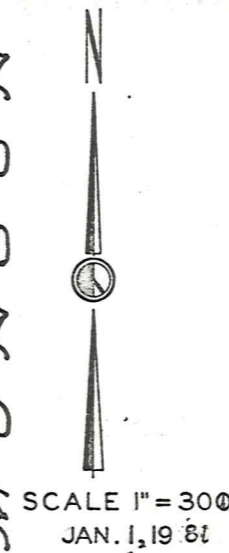


A	B	C	D
E	F	G	H
I	J	K	L
M	N	O	P

CHESTER



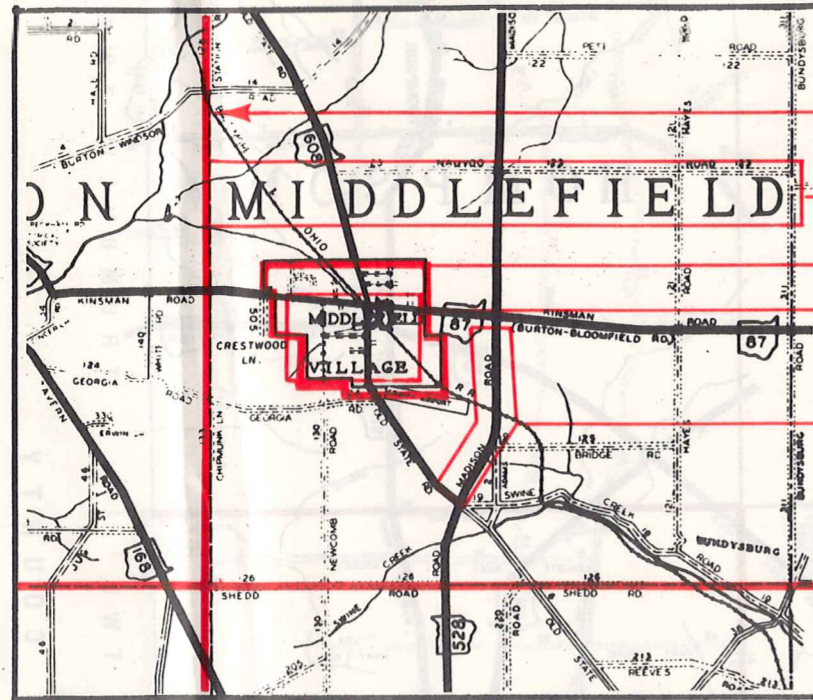
BROWN ESTATES  
TRACT 2 LOT 15  
VOL. 7 PG. 95  
23.592 ACRES  
SCALE 1" = 200'



A	B	C	D
E	F	G	H
I	J	K	L
M	N	O	

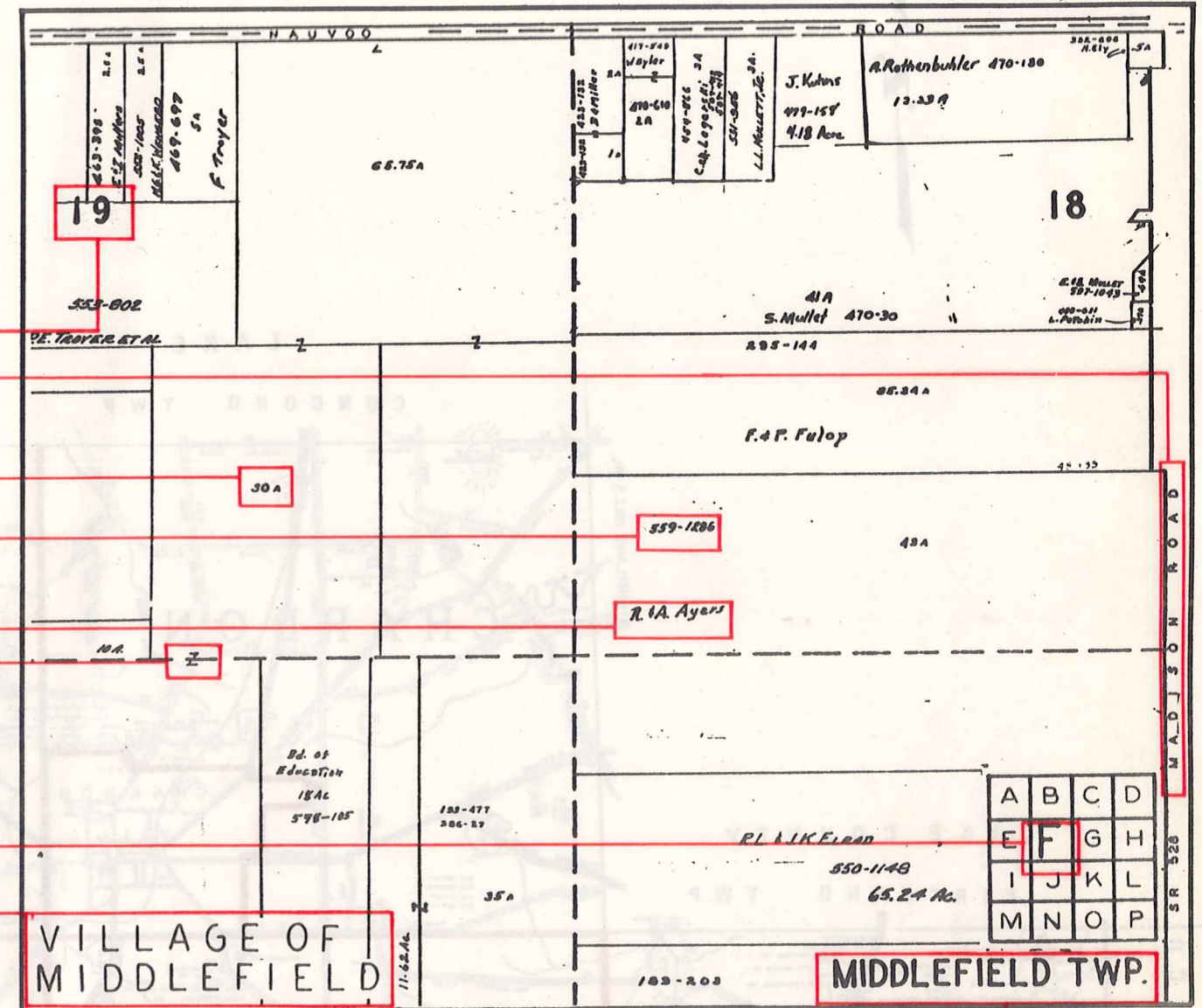
# Explanation and Use Sheet for Geauga County, Ohio

SAMPLE (PARTIAL) COUNTY INDEX MAP



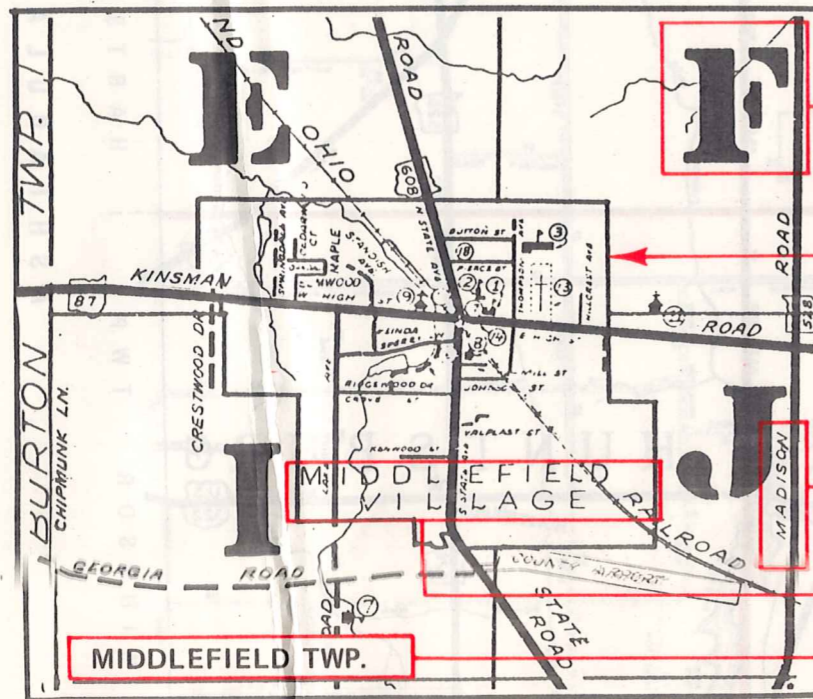
- Township Boundary
- Township Name
- Village Boundary
- Village Name
- Tract Lot Number
- Street Name
- Acreage
- Deed Book & Page
- Owners Name
- Denotes Continous Ownership

SAMPLE (PARTIAL) MAP PAGE



- Map Page Number
- Village Name
- Village Boundary
- Township Name

SAMPLE (PARTIAL) MUNICIPALITY INDEX MAP



- Street Name
- Village Name
- Township Name

## USE OF THE MAP VOLUME

1. LOCATE THE GENERAL AREA OF INTEREST ON THE COUNTY INDEX MAP, ATLAS PAGE 'B', AND NOTE THE MUNICIPALITY NAME (TOWNSHIP OR VILLAGE).
2. REFER TO THE TABLE OF CONTENTS, ATLAS PAGE 'C', AND NOTE THE BEGINNING ATLAS PAGE NUMBER FOR THE MUNICIPALITY OF INTEREST.
3. TURN TO THE PAGE INDICATED. ON THIS PAGE WILL APPEAR AN INDEX MAP FOR THAT MUNICIPALITY.
4. LOCATE THE GENERAL AREA OF INTEREST AND NOTE THE MAP PAGE NUMBER. THIS MAY BE EITHER A LETTER OR A NUMBER.
5. MAP PAGES ARE IN ALPHABETICAL (OR NUMERICAL) SEQUENCE FOLLOWING THE MUNICIPALITY INDEX MAP. FOLLOW SEQUENCE TO THE MAP PAGE INDICATED.
6. LOCATE SPECIFIC PARCEL OF INTEREST AND NOTE THE DESIRED INFORMATION.

NOTE: ON SOME MAPS YOU MAY BE REFERRED TO A DETAIL SHEET SHOWING AN ENLARGEMENT OF THE AREA. THESE MAPS ARE FOUND AT THE END OF THE REGULAR MAP PAGES IN EACH MUNICIPALITY IN EITHER ALPHABETICAL OR NUMERICAL SEQUENCE.

NOTE: CHARDON VILLAGE HAS TITLE SHEETS. TO LOCATE OWNERS NAME, NOTE THE PARCEL NUMBER, REFER TO THE TITLE PAGE FOLLOWING THE MAP OF INTEREST, FOLLOW NUMERICAL SEQUENCE TO THE PARCEL NUMBER OF INTEREST AND NOTE THE DESIRED INFORMATION. IN ALL OTHER MUNICIPALITIES THE OWNERS NAME APPEARS ON THE MAP PAGE.

This book is the property of REAL ESTATE DATA, INC. and is distributed by REDI under a leasing arrangement requiring return to REDI upon termination of the lease. REDI reserves the right to reclaim this book if found in the possession of any firm or person where possession was obtained through any unauthorized source.